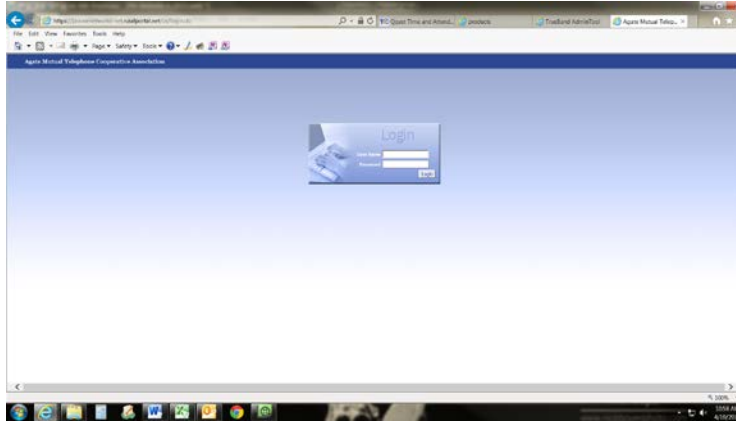


Wildblue/ Exede Admin Tool Information

Go to <http://prairienetworks-net.ruralportal.net>



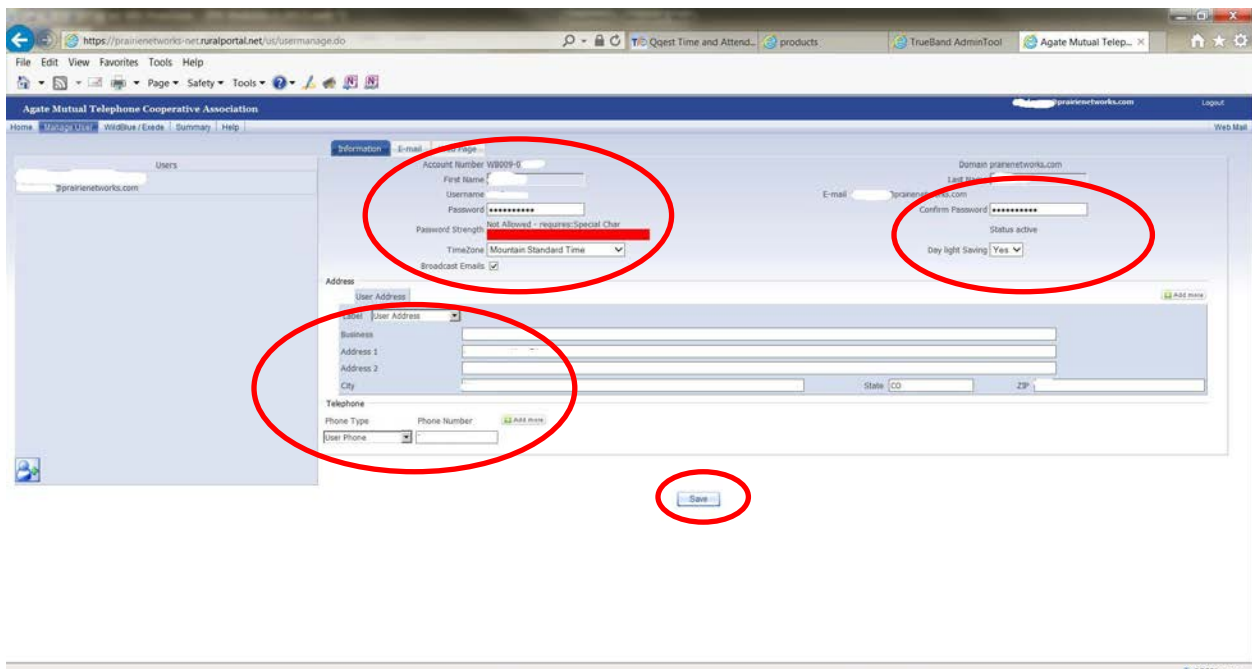
Log on with entire email address and Password

Example- myemail@prairienetworks.com

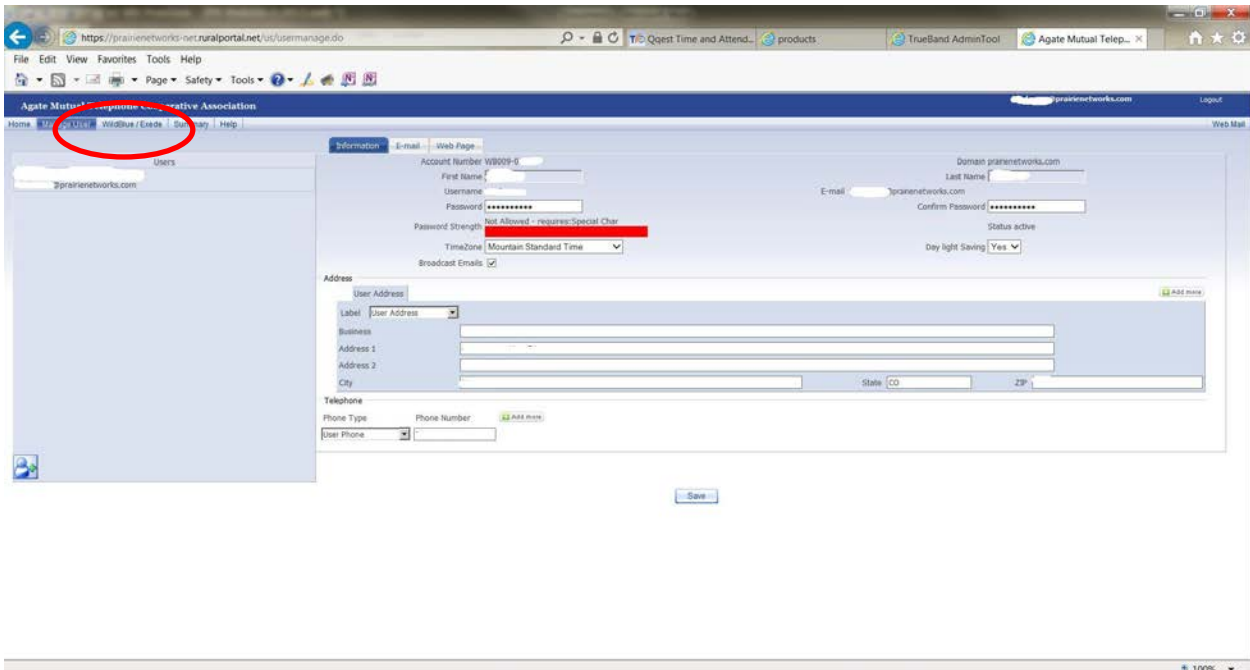
Passw0rd139

On the screen below- this is where you can make changes to you password on your account, update your mailing address, or phone number.

- Make sure you press the save button so that your changes are saved.



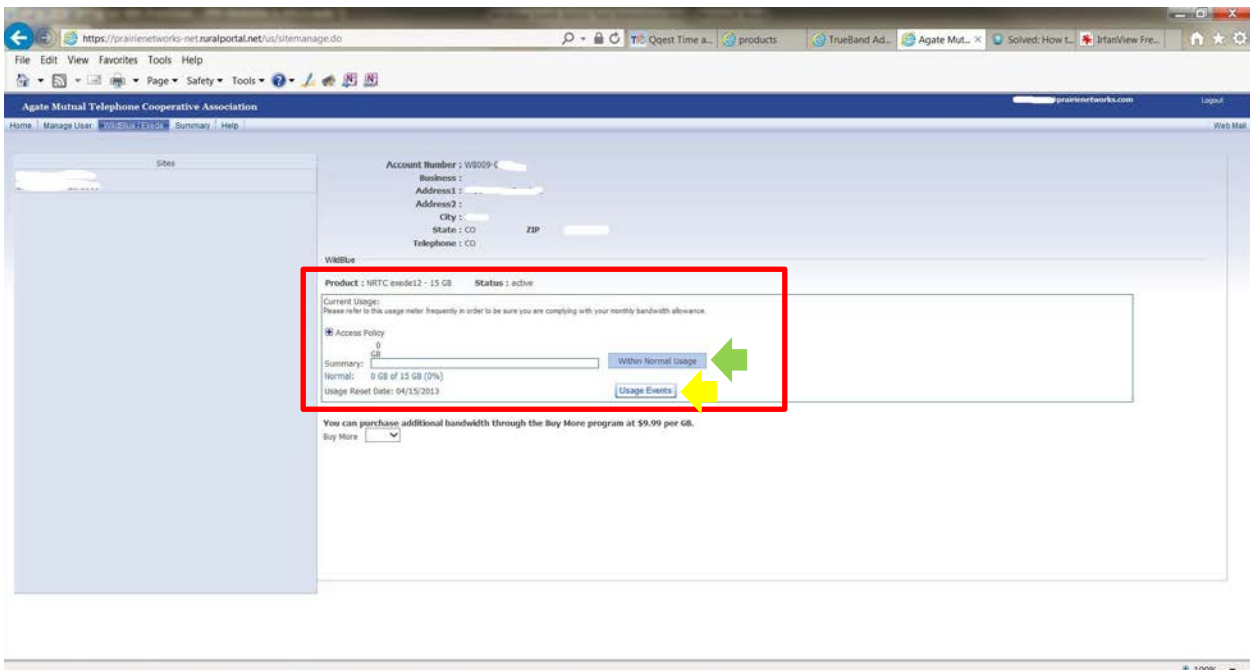
To look at your usage data... click the Wildblue / Exede Tab



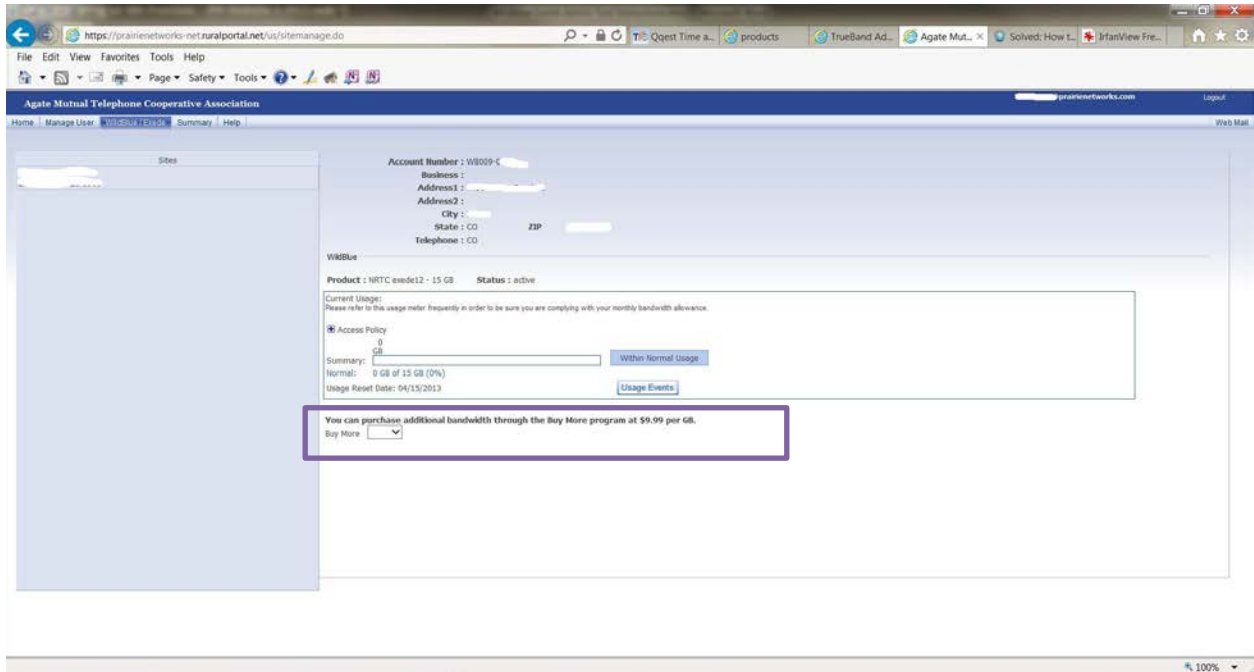
Once at the Wildblue/Exede Tab look at usage summary (red box)

If you are over your limit it will tell you see green arrow

To view usage events click the button (see yellow arrow)

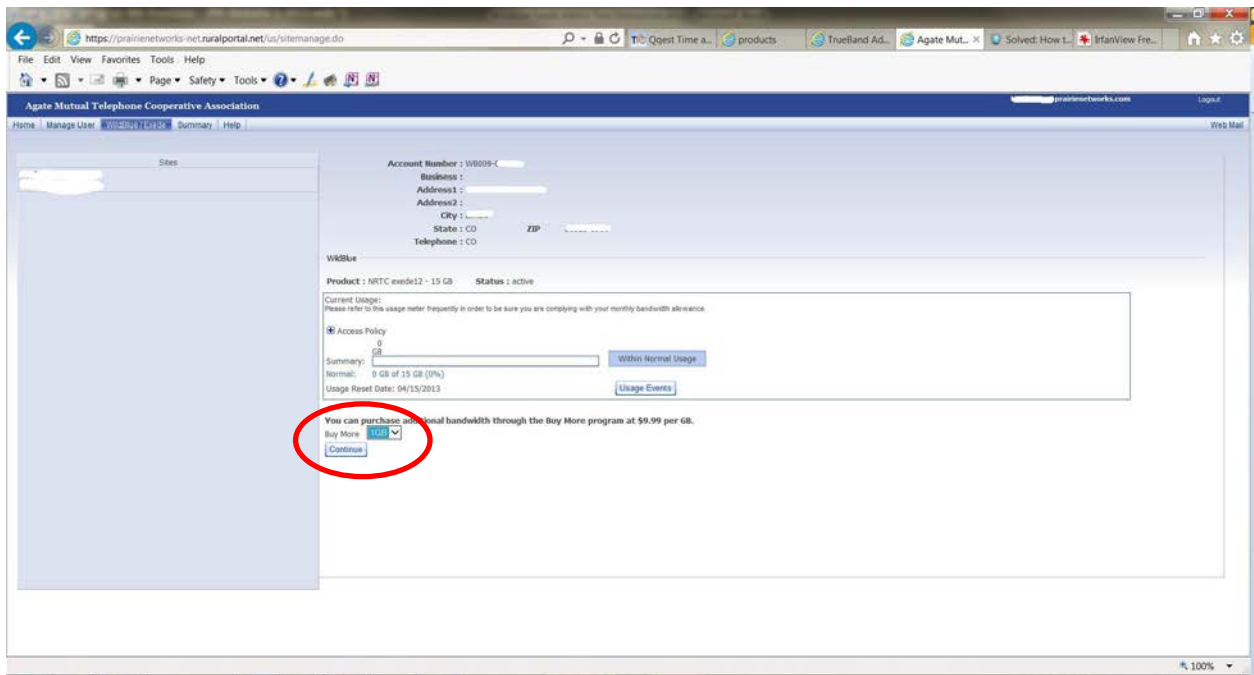


If you are over your limit on bandwidth, and still have more time within the reset period, you can opt to purchase more bandwidth (see purple box).



We recommend that you only purchase 1GB at a time, so that you don't pay for more than you can use.

*** Please note ONLY HIT THE CONTINUE BUTTON ONE TIME, and wait till it processes. Sometimes it can take up to 30 minutes for the usage data to update, so be patient.**



To logout select the LOGOUT button on the top right corner.

